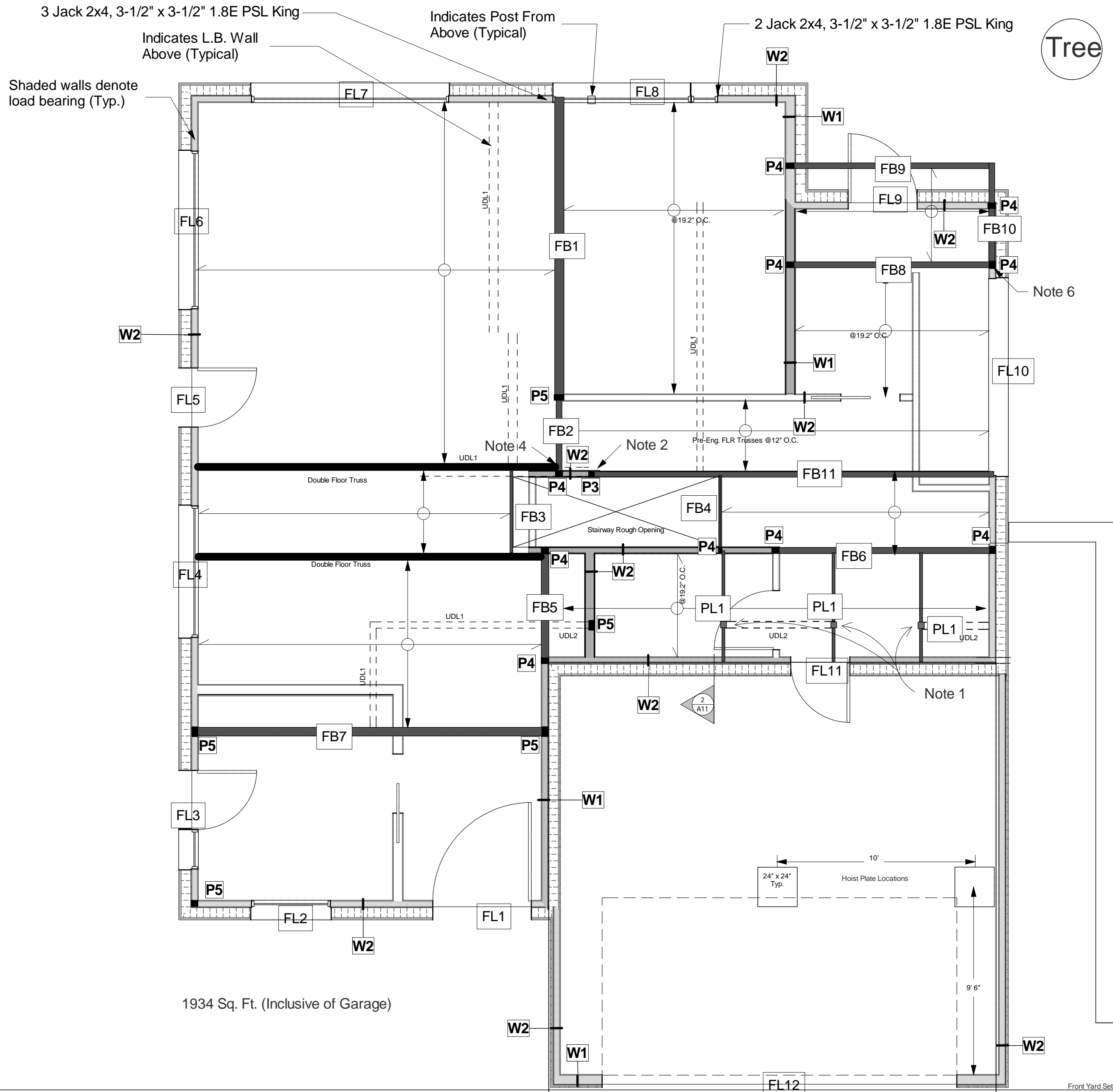


Legend

← Indicates Span of 11-7/8" TRI-FORCE OpenJoist Pre-Engineered Floor Trusses @ 16" O.C. U.N.O.



1934 Sq. Ft. (Inclusive of Garage)

Notes:

- 1) 3-1/2" x 11-7/8" PSL Beam under point load from post above
- 2) Support FB11 on Side of P3 Using Seated Beam Connection. Provide Notch At End Of Beam For 3/16" Steel Plate. Weld Horizontal Plate To Vertical Plate with 3/16" Fillet Weld All Around. Provide Solid Blocking In Floor Space Around Column. See 1/S3
- 3) All walls 2x4@16" O.C. U.N.O.
- 4) Hang Double Floor Truss on Side of FB2
- 5) Hang FB8 and FB9 on Side of FB10 with Simpson Strong-Tie HUS412 Beam Hanger
- 6) Provide Simpson Strong-Tie HZA Uplift Clip from FB10 to P4

Special Loads Applied to Floor Trusses

Type	Unfactored Loads	
	Dead	Live
UDL1	0.6 kN/m	None
UDL2	1.2 kN/m	2.7 kN/m
PL1	1.1 kN	2.4 kN

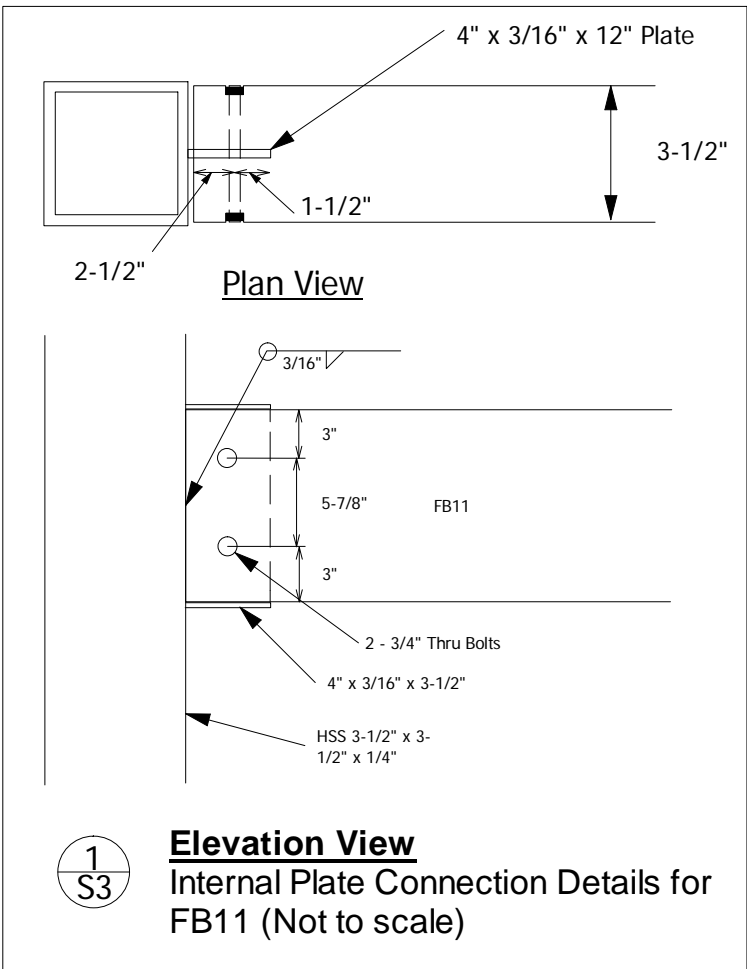
UDL = Uniformly Distributed Load
PL = Point Load

Wall Schedule	
Type	Framing Members
W1	2x6 Wood Studs @ 16" O.C.
W2	2x4 Wood Studs @ 16" O.C.

Upper Floor Wood Lintel Schedule			
#	Size	Notes	Length
FL1	3-1/2" x 9-1/4" PSL 2.2E	1 Jack 2 King 2x4 Studs Each End	5' 9"
FL2	3-1/2" x 7" PSL 1.8E	1 Jack 2 King 2x4 Studs Each End	4' 9"
FL3	3-1/2" x 7" PSL 1.8E	1 Jack 2 King 2x4 Studs Each End	5' 10-1/2"
FL4	3-1/2" x 9-1/4" PSL 2.2E	1 Jack 2 King 2x4 Studs Each End	7' 5"
FL5	2-Ply 1-3/4" x 7-1/4" LVL 1.9E	1 Jack 2 King 2x4 Studs Each End	3' 9"
FL6	3-1/2" x 9-1/4" PSL 2.2E	2 Jack 2x4, 3-1/2" x 5-1/4" 1.8E PSL King Each End	9' 3"
FL7	3-1/2" x 9-1/4" PSL 2.2E	1 Jack 2x4, 3-1/2" x 5-1/4" 1.8E PSL King Each End	11' 3"
FL8	2-Ply 1-3/4" x 18-3/4" LVL 2.0E	REFER to PLAN	9' 10"
FL9	3-1/2" x 5-1/4" PSL 1.8E	1 Jack 1 King 2x4 Studs Each End	4' 0"
FL10	3-1/2" x 11-7/8" PSL 2.2E	2 Jack 2x4, 3-1/2" x 5-1/4" 1.8E PSL King Each End	11' 9"
FL11	3-1/2" x 5-1/4" PSL 1.8E	1 Jack 1 King 2x4 Studs Each End	3' 6"
FL12	5-1/4" x 14" PSL 2.2E	2 Jack 2 King 2x6 Studs Each End	19' 0"

Upper Floor Beam Schedule		
#	Size (PSL 2.2E U.N.O.)	Length
FB1	5-1/4" x 11-7/8" PSL Dropped	15' 5-1/4"
FB2	3-1/2" x 11-7/8" PSL Flush	4' 2"
FB3	1-3/4" x 11-7/8" LVL 2.0E Flush	4' 3.5"
FB4	1-3/4" x 11-7/8" LVL 2.0E Flush	3' 10-3/4"
FB5	3-1/2" x 11-7/8" PSL Flush	5' 10-1/2"
FB6	3-1/2" x 11-7/8" PSL Flush	11' 3-1/4"
FB7	5-1/4" x 11-7/8" PSL Flush	18' 0-3/4"
FB8	3-1/2" x 11-7/8" PSL Flush	10' 2"
FB9	3-1/2" x 11-7/8" PSL Flush	10' 2"
FB10	3-1/2" x 11-7/8" PSL Flush	5' 2"
FB11	3-1/2" x 11-7/8" PSL Flush	20' 3-1/2"

Post Schedule	
#	Description
P1	3-Ply 2x6 S-P-F No. 2 Post
P2	4-Ply 2x6 S-P-F No. 2 Post
P3	HSS 3-1/2" x 3-1/2" x 1/4" 2 Storey Continuous
P4	3-Ply 2x4 S-P-F No. 2 Post
P5	4-Ply 2x4 S-P-F No. 2 Post



Project

North

No.	Date	Issue
A	September 22, 2013	For Comment
B	November 15, 2013	For Comment/Markup
C	November 21, 2013	For Comment/Markup
1	March 24, 2014	Issued For Building Permit App.

SENWiEco Designs

718-333 Brooksbank Ave Room 237
North Vancouver, BC V7J 3V8
Tel: 778-688-5807

The Enclosure

Pemberton Heights, North Vancouver - British Columbia

Upper Floor Framing Plan

Scale: 1/4" = 1'	S3
Date: March 24, 2014	
Drawn By: SW	