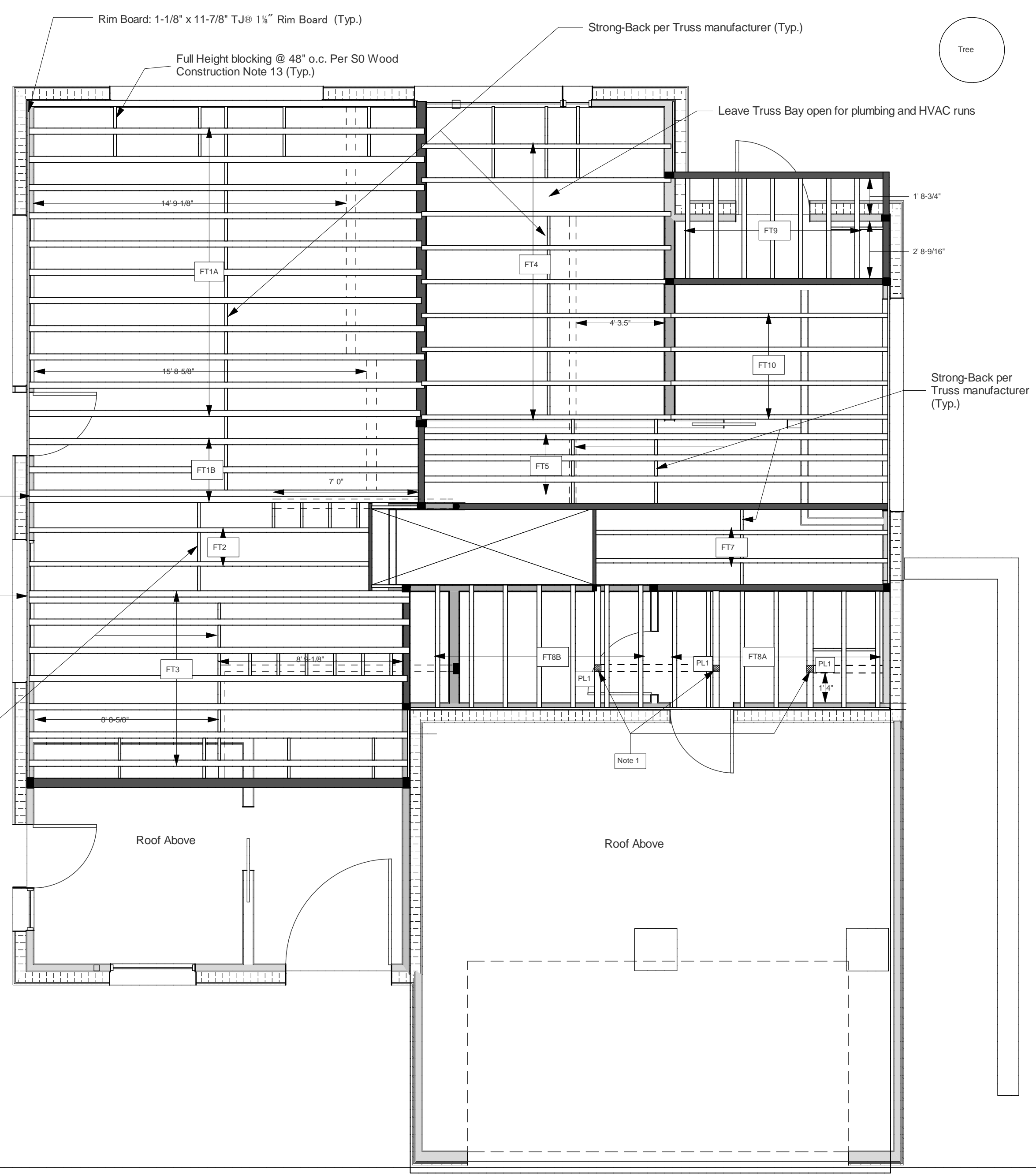


No.	Date	Issue
A	November 20, 2013	For Comment/Markup
B	November 21, 2013	For Comment/Markup
C	January 4, 2014	For Comment/Markup
1	May 9, 2014	Issued For Building Permit App.



Manufactured Floor Truss Schedule

ID	Specification	Bearing Adder	Hanger	Order Length	Qty
FT1A	OJ415 - 11.875" @ 16" O.C. Clear Span: 18' 1-1/2"	3"		20'	11
FT1B	OJ415 - 11.875" @ 16" O.C. Clear Span: 18' 1-1/2"	1.5"	Simpson LT351188	20'	4
FT2	OJ315 - 11.875" @ 16" O.C. Clear Span: 15' 9-1/4"	1.5"	Simpson LT251188	16'	2
FT3	OJ415 - 11.875" @ 16" O.C. Clear Span: 17' 6-1/4"	3"		18'	8
FT4	OJ314 - 11.875" @ 19.2" O.C. Clear Span: 11' 3-1/2"	3"		12'	9
FT5	OJ418 - 11.875" @ 12" O.C. Clear Span: 21' 7-1/2"	1.5"	Simpson LT351188	22'	3
FT6	Replaced with PSL Beam				
FT7	OJ314 - 11.875" @ 16" O.C. Clear Span: 13' 2-7/8"	1.5"	Simpson LT251188	14'	2
FT8A	OJ314 - 11.875" @ 19.2" O.C. Clear Span: 5' 3-1/2"	1.5"	Simpson LT251188	6'	8
FT8B	OJ314 - 11.875" @ 19.2" O.C. Clear Span: 5' 3-1/2"	3"		6'	8
FT9	OJ314 - 11.875" @ 16" O.C. Clear Span: 4' 7" **	0"	Simpson LT351188	6'	7
FT10	OJ314 - 11.875" @ 19.2" O.C. Clear Span: 9' 10-1/2"	3"		12'	4

* Extra length needed to meet Rim Joist ** Bears on exterior wall

Notes and Legend:
 1) Three lintel support point loads to be born by 3-1/2 x 11-7/8" PSL Beam. Refer to S3 for load values
 2) See S3 for UDL Loads

--- Indicates bearing wall above (Ceiling joists only - inaccessible attic). Details per TriForce OpenJoist Technical Detail No. 11VS for Perpendicular walls and with 2x6 Blocking every 24" for parallel walls.



718-333 Brooksbank Ave Room 237
 North Vancouver, BC V7J 3V8
 Tel: 778-688-5807

Project Title
The Enclosure
 Pemberton Heights, North Vancouver - British Columbia

Drawing
Engineered Truss Plan - Ground Floor

Scale: 1/4" = 1'
 Date: May 9, 2014
 Drawn By: SW

Dwg. #
S10