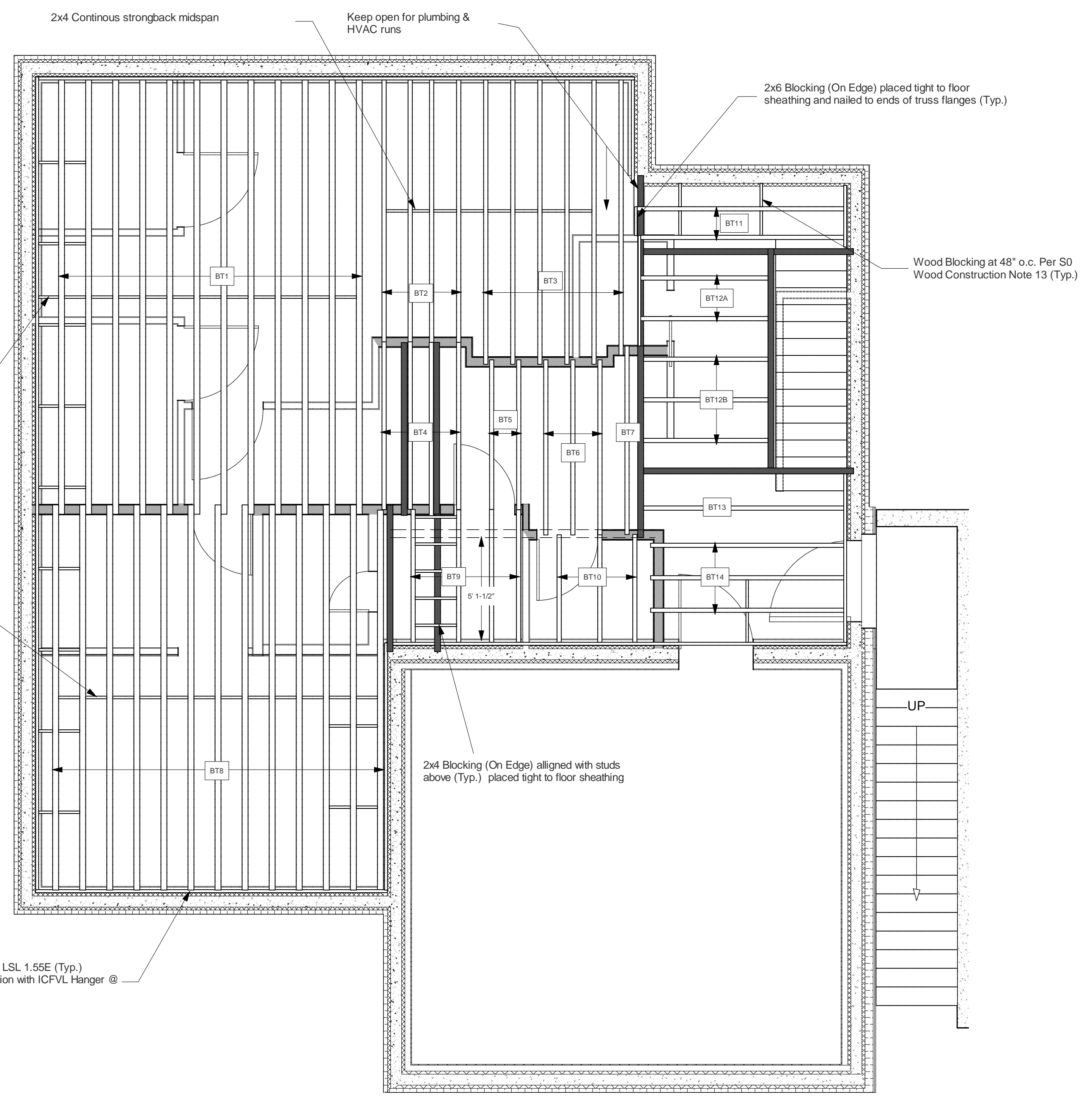


No.	Date	Issue
A	November 20, 2013	For Comment/Markup
B	November 21, 2013	For Comment/Markup
1	May 9, 2014	Issued For Building Permit App.



ID	Specification	Bearing Adder	Hanger	Order Length	Qty
BT1	OJ418 - 11.875" @ 16" O.C. Clear Span: 20' 10-1/2"	1.5"	Simpson LT351188	22'	12
BT2	OJ314 - 11.875" @ 16" O.C. Clear Span: 12' 7-1/2"	1.5"	Simpson LT251188	14'	4
BT3	OJ314 - 11.875" @ 16" O.C. Clear Span: 13' 8-3/4"	1.5"	Simpson LT251188	14'	6
BT4	OJ314 - 11.875" @ 16" O.C. Clear Span: 7' 9-1/2"	3"		10'	4
BT5	OJ314 - 11.875" @ 16" O.C. Clear Span: 6' 9-3/4"	3"		8'	2
BT6	OJ314 - 11.875" @ 16" O.C. Clear Span: 8' 2"	3"		10'	3
BT7	OJ314 - 11.875" @ 12" O.C. Clear Span: 8' 9"	3"		10'	1
BT8	OJ415 - 11.875" @ 16" O.C. Clear Span: 18' 7-1/4"	1.5"	Simpson LT351188	20'	13
BT9	OJ314 - 11.875" @ 24" O.C. Clear Span: 6' 4-1/2"	1.5"	Simpson LT251188	8'	4
BT10	OJ314 - 11.875" @ 24" O.C. Clear Span: 5' 2"	1.5"	Simpson LT251188	6'	3
BT11	OJ314 - 11.875" @ Centered Clear Span: 9' 9-1/4"	1.5"	Simpson LT251188	10'	2
BT12a	OJ314 - 11.875" @ 24" O.C. Clear Span: 5' 11-3/4"	1.5"	Simpson LT251188	8'	2
BT12b	OJ314 - 11.875" @ 24" O.C. Clear Span: 5' 11-3/4"	0"	Simpson LT251188	6'	3
BT13	OJ314 - 11.875" @ 19.2" O.C. Clear Span: 9' 9-1/4"	0	Simpson LT251188	10'	1
BT14	OJ314 - 11.875" @ 19.2" O.C. Clear Span: 8' 11"	1.5"	Simpson LT251188	10'	3

Ledger: 1-3/4" x 11-7/8" LSL 1.55E (Typ.) attached to ICF Foundation with ICFVL Hanger @ 32" o.c.

Ledgend:
 --- Indicates bearing wall above (Distributed Floor Joists). Detail per TriForce OpenJoist Technical Detail No. 11VS for Perpendicular walls.



718-333 Brooksbank Ave Room 237
 North Vancouver, BC V7J 3V8
 Tel: 778-688-5807

Project Title
The Enclosure
 Pemberton Heights, North Vancouver - British Columbia

Drawing
Engineered Truss Plan - Basement

Scale: 1/4" = 1'
 Date: May 9, 2014
 Drawn By: SW

Dwg. #
S09