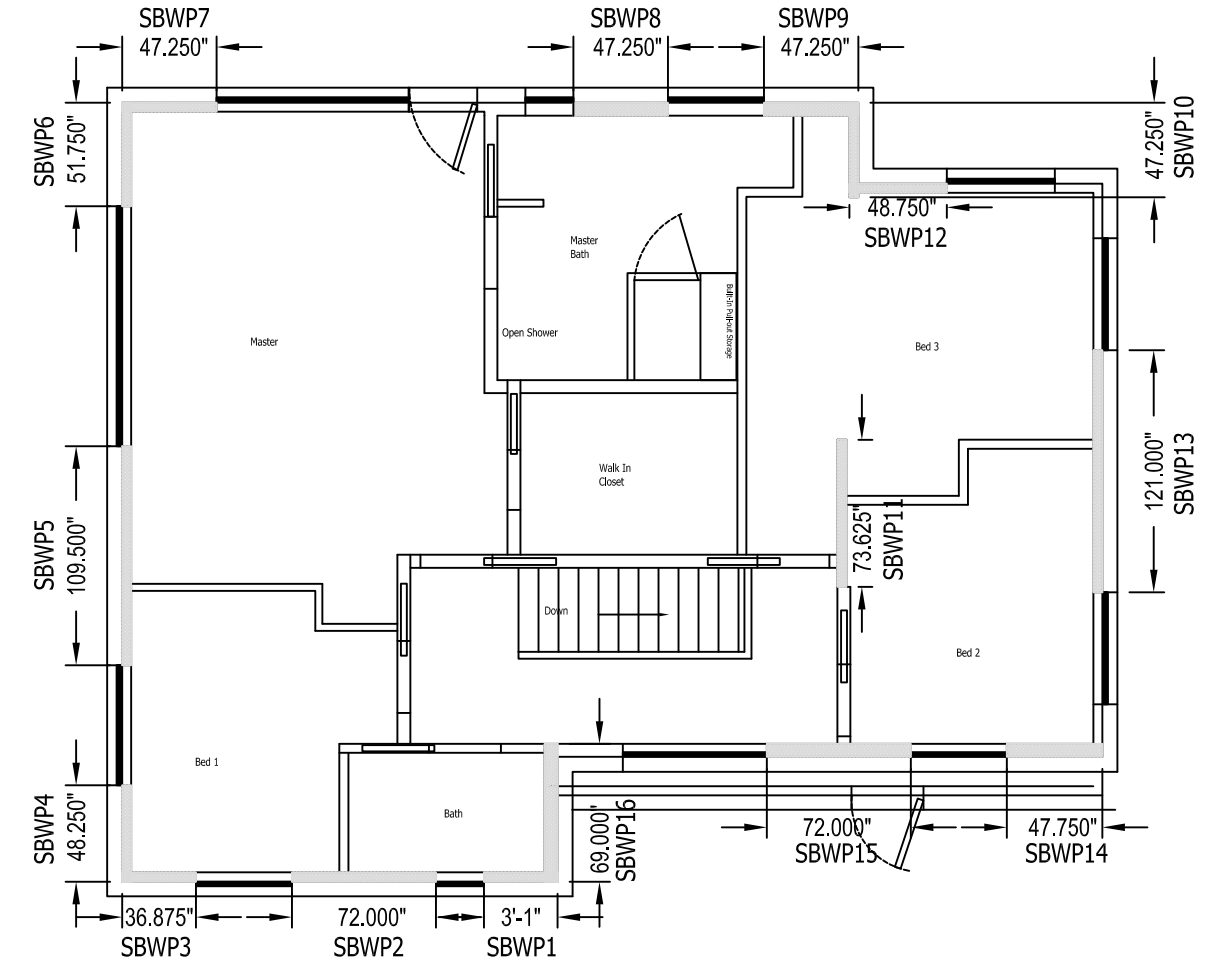
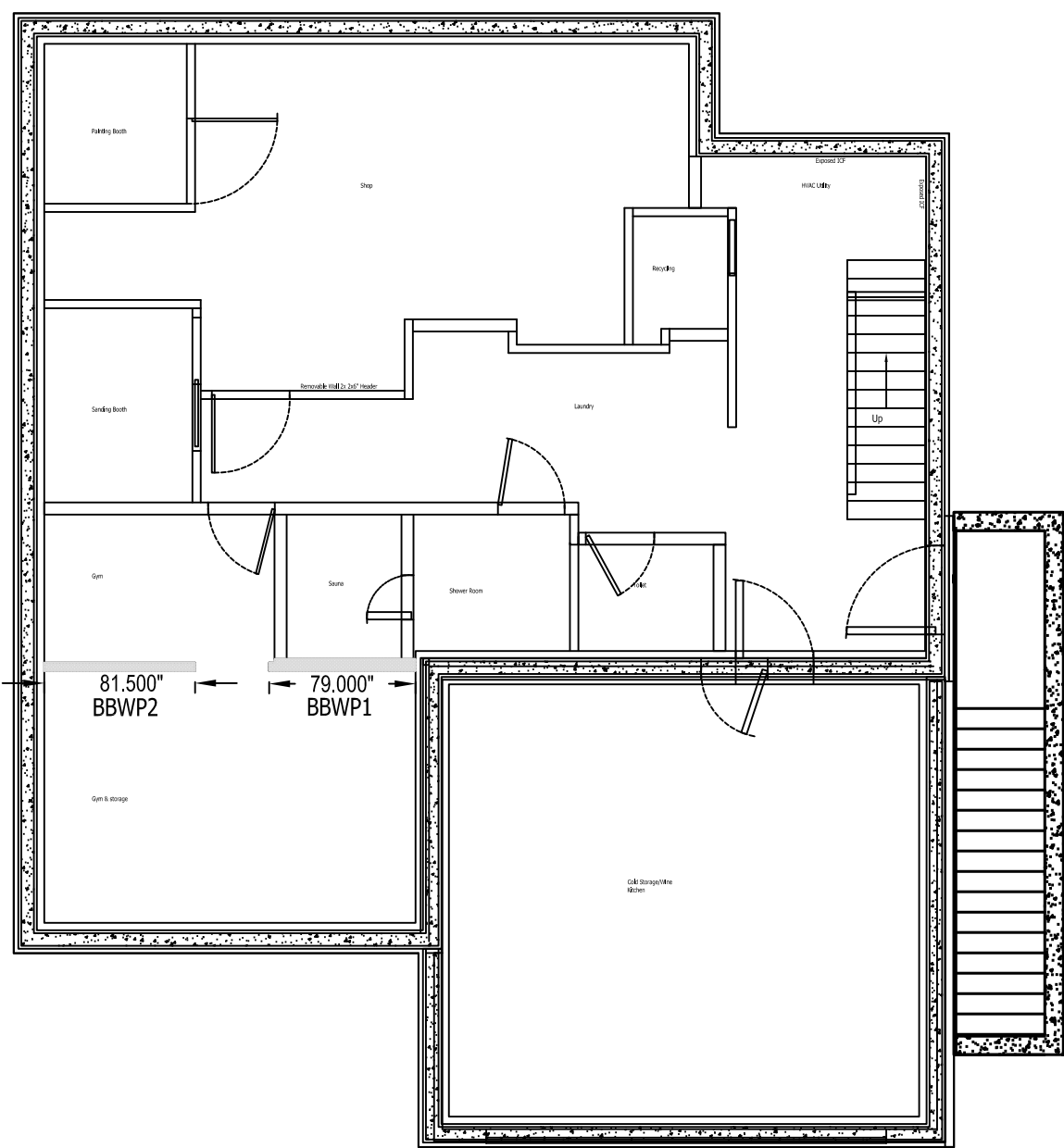


1 S14 First Storey Braced Wall Panels



2 S15 Second Storey Braced Wall Panels



3 S14 Basement Braced Wall Panels

Panel Schedule

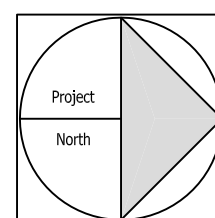
| Panel | Length | Min Length | Band |
|--------|----------|------------|--------------|
| BBWP1 | 81.5 | 47.25 | BBWB9 |
| BBWP2 | 79 | 47.25 | BBWB9 |
| FBWP1 | 51.375 | 47.25 | FBWB1 |
| FBWP2 | 48.875 | 47.25 | FBWB1 |
| FBWP3 | 79.625 | 47.25 | FBWB2 |
| FBWP4 | 47.875 | 47.25 | FBWB2 |
| FBWP5 | 65.75 | 47.25 | FBWB2 |
| FBWP6 | 48 | 47.25 | FBWB3 |
| FBWP7 | 52.375 | 47.25 | FBWB3 |
| FBWP8 | 47.75 | 47.25 | FBWB3 |
| FBWP9 | 181.75 | 47.25 | FBWB4 |
| FBWP10 | 40.75 | 34.25 | FBWB5 Note 2 |
| FBWP11 | 45.75 | 34.25 | FBWB5 Note 2 |
| FBWP12 | 48.25 | 47.25 | FBWB6 |
| FBWP13 | 113.125 | 47.25 | FBWB6 |
| FBWP14 | 249.25 | 47.25 | FBWB6 |
| FBWP15 | 89.5 | 47.25 | FBWB7 |
| FBWP16 | 151.375 | 47.25 | FBWB7 |
| FBWP17 | 153 | 47.25 | FBWB8 |
| FBWP18 | 101.75 | 47.25 | FBWB8 |
| FBWP19 | 124.75 | 47.25 | FBWB9 |
| SBWP1 | 36.875 | 34.25 | SBWB9 Note 3 |
| SBWP2 | 72 | 34.25 | SBWB9 Note 3 |
| SBWP3 | 36.875 | 34.25 | SBWB9 Note 3 |
| SBWP4 | 48.25 | 47.25 | SBWB2 |
| SBWP5 | 109.5 | 47.25 | SBWB2 |
| SBWP6 | 51.75 | 47.25 | SBWB2 |
| SBWP7 | 47.25 | 47.25 | SBWB3 |
| SBWP8 | 47.25 | 47.25 | SBWB3 |
| SBWP9 | 47.25 | 47.25 | SBWB3 |
| SBWP10 | 47.25 | 47.25 | SBWB4 |
| SBWP11 | 73.5625 | 47.25 | SBWB4 |
| SBWP12 | 48.75 | 47.25 | SBWB5 |
| SBWP13 | 121 | 47.25 | SBWB6 |
| SBWP14 | 47.75 | 47.25 | SBWB7 |
| SBWP15 | 72 | 47.25 | SBWB7 |
| SBWP16 | 69 | 47.25 | SBWB8 |
| Ttl | 2877.688 | | |

All dimensions shown in inches

Notes:

- All panels lengths measured down centreline to panel outside edges.
- Alternative Procedure for Narrow Braced Wall Panels Elected
 - Wall Height: 9' (2.74m - Use 3.1m column in Table C2)
 - Minimum Panel Length: .87m (34.25")
 - Tallest Opening in Band: 80" (2.03m - use 2.1m row in Table C2)
 - Band Required Panel Density: 66% (Per Table C2 Supporting roof plus 2 floors)
- Alternative Procedure for Narrow Braced Wall Panels Elected
 - Wall Height*: 9'4" (2.85m - Use 3.1m column in Table C2)
 - Minimum Panel Length: .87m (34.25")
 - Tallest Opening in Band: 80" (2.03m - use 2.1m row in Table C2)
 - Band Required Panel Density: 46% (Per Table C2 Supporting roof plus 1 floors)

* Gable wall - measured to highest point in wall



Project Title
The Enclosure
Pemberton Heights, North Vancouver - British Columbia

Drawing
Braced Wall Panel Plan

Scale: 1/8"=1'-0"

Drawn By:
SW

Dwg. #:
S14

May 9, 2014

| No. | Date | Issue |
|-----|--------------|----------------------------------------|
| A | Nov. 5, 2013 | For Comment |
| 1 | May 9, 2014 | Issued for Building Permit Application |